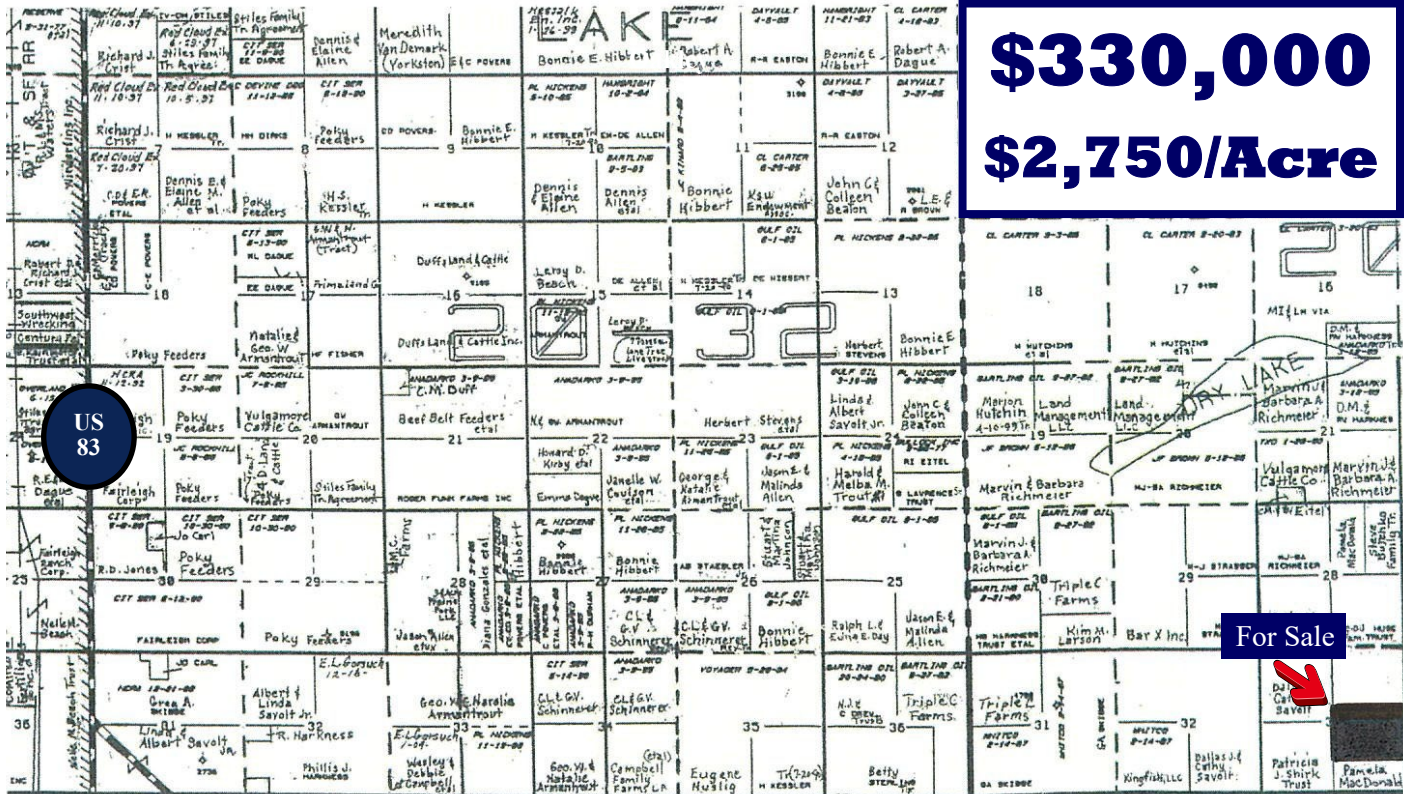


LAND FOR SALE

120 Acres Prime Cropland

N/2SE/4 and the S/2S/2NE/4 of Section 33-20-31, Scott County, KS

\$330,000
\$2,750/Acre



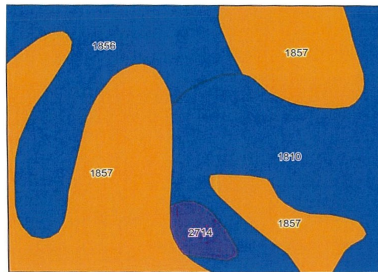
US 83

For Sale

Scott - Finney County Line



Aerial Map



Soils Map

FSA Information:

Cropland Acres	119.64
Wheat Base/PLC Yield	34.08/42
Corn Base/PLC Yield	49.33/107
Grain Sorghum Base/PLC Yield	20.46/60

Crops: The tenant shall receive all of the 2026 growing wheat crop located on this property. Any future FSA payments will follow the crops and will be paid pursuant to FSA regulations.

Minerals: The Buyer shall receive all of the Seller's interest in the mineral rights on this property at closing.

Possession: Immediately following 2026 wheat harvest.

Land Location: 14 miles South of Scott City, KS to county line road, 8 1/2 miles East and 1/4 mile North.

2025 Taxes: \$615.36

HomeLand
REALTY AUCTION

1055 S. Range Ave. - Colby, KS 67701
785-462-8255

www.homelandre.com
rbedore@homelandre.com

"The Land Man"
Rock L. Bedore
785-443-1653

