

# 716 Broadway Ave. - Goodland, KS

*This three bedroom, two bath Ranch style home includes a remodeled kitchen with newer appliances, remodeled bathroom, newer roof, and newer windows. Sprinkler system front and back. New 25x30 garage. Park, banks, courthouse, and post office are all within walking distance. Priced to sell. Call Tom today for a tour.*



## \$122,500

Year Built: 1971  
Property Type: Residential  
Property SubType: Single-Family  
Main/Level 1: 1,640  
Approx. Square Feet: 1,640  
Lot Size: 63x140  
Approx. Lot Square Feet: 8,820

Construction: Frame w/ Siding  
Style: Ranch  
Stories: 1 Story  
Zoning: Residential  
County: Sherman  
Price/SqFt: \$74.70  
Heating: Hot Water Heat  
Cooling: Central Air

Living Room:	16x16	Level: 1
Kitchen:	11x9	Level: 1
Bedroom 1:	12x10.5	Level: 1
Bedroom 2:	13x11	Level: 1
Bedroom 3:	15x14	Level: 1
Bathroom 1:	14x6.5	Level: 1

Closet:	10.5x10.5	Level: 1
Bathroom 2:	11x7	Level: 1
Utility Room:	7x6	Level: 1
Pantry:	6.5x5.5	Level: 1
Bathtub:	42"x72"	
Garage:	Two-car Detached	

Information has been obtained from sources deemed reliable; Broker does not guarantee information. Parties are welcomed to verify information through a professional.

# 13667

**HomeLand**  
**REALTY AUCTION**  
COLBY GOODLAND

(785) 462-8255 (785) 462-8255  
[www.homelandre.com](http://www.homelandre.com)

**Call Tom today to set up a showing!**



**Tom Harrison**  
Supervising Broker/Auctioneer

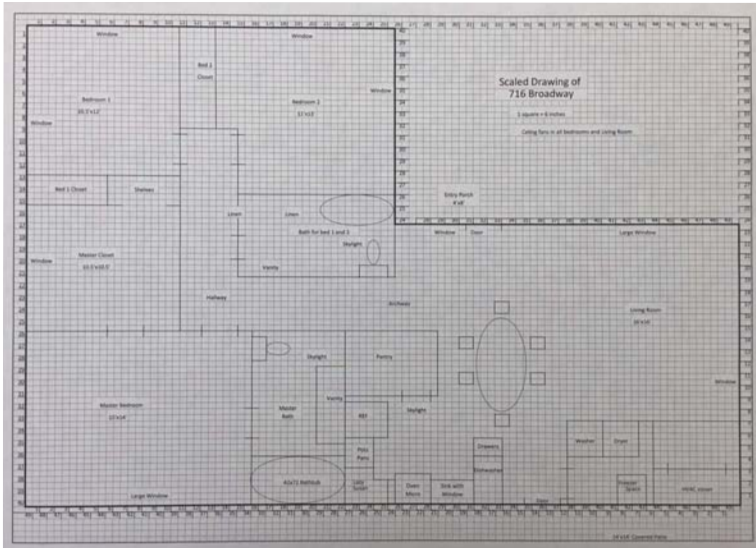
**(785) 443-0136**

Email: [tharrison@homelandre.com](mailto:tharrison@homelandre.com)

**Address: 716 Broadway Ave. - Goodland, KS**

Legal Description: South Thirteen Feet (S13') of Lot Seventeen (17), Lots Eight (8) and Nine (9), Block Forty-five (45), Second Addition to the City of Goodland, Sherman County, KS

Included with the home: dishwasher, disposal, refrigerator, stove, oven, microwave, ceiling fans, window coverings, and garage door opener. Personal property "AS IS".



2017 Taxes: \$2,191.32  
Utilities: Gas: \$ 67.00  
City: \$ 155.00



*HomeLand*  
**REALTY AUCTION**



**Call Tom at 785-443-0136**

[www.homelandre.com](http://www.homelandre.com)

Information has been obtained from sources deemed reliable; Broker does not guarantee information. Parties are welcomed to verify information through a professional.