

1375 Brookside Drive - Colby, KS

This is a great family home in a very desirable neighborhood. It offers four bedrooms and three baths with plenty of room for a growing family. The enclosed sun room provides additional space for entertainment. Call Rock today for a showing!



PRICE REDUCED



~~\$225,000~~ **\$210,000**

Year Built: 1976
Property Type: Residential
Property SubType: Single Family Res.
Main/Level 1: 1,503
Level 2: 735
Basement: 741
Approx. Square Feet: 2,979
Lot Size: 90x125

Approx. Lot Square Feet: 11,250
Construction: Frame w/Siding and Brick
Style: Ranch
Stories: Tri-Level
County: Thomas
Price/SqFt: \$70.49
Heating: Central Heat
Cooling: Central Air

Living Room: 23x14 Level: 1
Dining Room: 11x12 Level: 1
Kitchen: 11x11 Level: 1
Bedroom 4: 13x9 Level: 1
Bathroom 1: 7x6 Level: 1
Bathroom 3: 7x5 Level: 1
Family Room: 17x15 Level: 1
Garage: Two-car Attached 21x27
Fireplace: Wood burning

Bedroom 1: 15x11 Level: 2
Bedroom 2: 11x11 Level: 2
Bedroom 3: 11x10 Level: 2
Bathroom 2: 7x5 Level: 2
Rec Room: 14x12 Level: Basement
Utility Room: 18x6 Level: Basement
Store Room: 27x11 Level: Basement
Basement: Partial

Information has been obtained from sources deemed reliable; Broker does not guarantee information. Parties are welcomed to verify information through a professional.

74604

Call Rock today to set up a showing!

HomeLand
REALTY AUCTION
(785) 462-8255
www.homelandre.com



Rock L. Bedore
Associate Broker

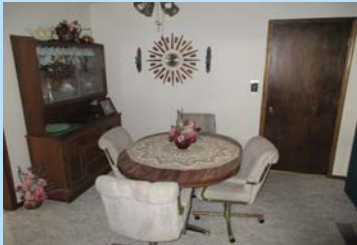
(785) 443-1653

Email: rbedore@homelandre.com

Address: 1375 Brookside Drive - Colby, KS

Legal Description: Lot Eight (8), Block Four (4), Eastern Heights Addition to the City of Colby, Thomas County, KS

Included with the home: stove, refrigerator, dishwasher, microwave, window coverings, blinds, water softener, ceiling fans, garage door opener, washer and dryer. All personal property "AS IS".



- Very desirable neighborhood
- All appliances included
- Multiple family rooms
- Plenty of storage space
- Enclosed sun room (24x18)
- Wood burning fireplace
- Two-car attached garage
- 10x15 storage shed
- Private back yard
- Furniture is negotiable



Average Utilities: Gas \$60.00 City \$182.68
2016 Taxes \$3,274.34



www.homelandre.com

Call Rock at 785-443-1653

Information has been obtained from sources deemed reliable; Broker does not guarantee information. Parties are welcomed to verify information through a professional.