

315 1/2 N. Main Ave. - Goodland, KS

Three bedroom, two bath manufactured home on a nice sized lot. Home is in very good condition, very private. Nice sized garage and shop area. Call Tom today to see this home!



PRICE REDUCED

~~\$79,500~~ **\$74,000**

Year Built: 1977
Property Type: Residential
Property SubType: Single Family Res.
Main/Level 1: 1,608
Approx. Square Feet: 1,608
Lot Size: 87x300 Regular Lot 87x188 Rear Lot
Approx. Lot Square Feet: 26,100 Regular Lot
16,356 Rear Lot

Construction: Frame w/Siding
Style: Double Wide
Stories: One Story
Zoning: Residential
County: Sherman
Price/SqFt: \$46.02
Heating: Central Heat
Cooling: Central Air

Living Room:	18.9x13	Level: 1
Dining Room:	15x11	Level: 1
Kitchen:	13.5x11.7	Level: 1
Bedroom 1:	11.5x11	Level: 1
Bedroom 2:	9x8	Level: 1
Bedroom 3:	14.7x13	Level: 1
Bathroom 1:	10.9x5	Level: 1
Bathroom 2:	10x9	Level: 1

Utility Room:	8x6	Level: 1
Other Room:	10.6x9	Level: 1
Patio/Deck: Covered Patio		
Basement: Crawl Space		
Garage: Three-car Detached		

Information has been obtained from sources deemed reliable; Broker does not guarantee information. Parties are welcomed to verify information through a professional.

13574

Call Tom today to set up a showing!



COLBY **GOODLAND**
(785) 462-8255 (785) 899-3060

www.homelandre.com



Tom Harrison
Supervising Broker/Auctioneer

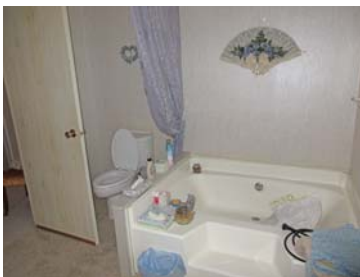
(785) 443-0136

Email: tharrison@homelandre.com

Address: 315 1/2 N. Main Ave. - Goodland, KS

**Legal Description: S18, T08, R39, BEG 90 S & 188 E INTER E R/W LINE
MINE AVE & N LINE SE4 NE4 THE E 112 TH S 87 TH W 112 TH N,
GOODLAND CITY TRACTS (N. MAIN), Goodland, Sherman County, KS**

Included with the home: dishwasher, disposal, refrigerator, stove, hood, window coverings, water softener, ceiling fans, and garage door opener. All personal property "AS IS".



Average Utilities: Gas \$57.00 City \$125.00
2016 Taxes \$888.87



www.homelandre.com

Call Tom at 785-443-0136

Information has been obtained from sources deemed reliable; Broker does not guarantee information. Parties are welcomed to verify information through a professional.